

Miombo



The Peko Pe I Stove

Background

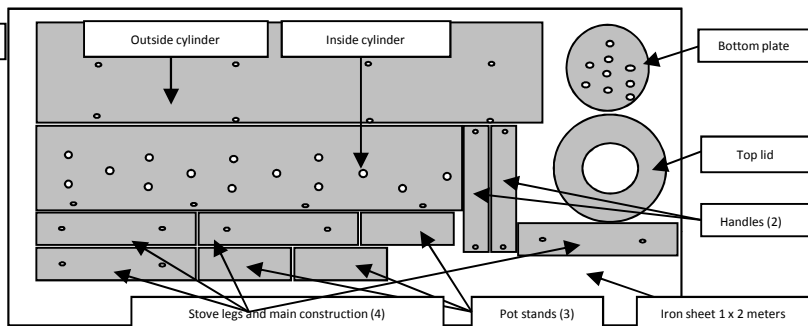
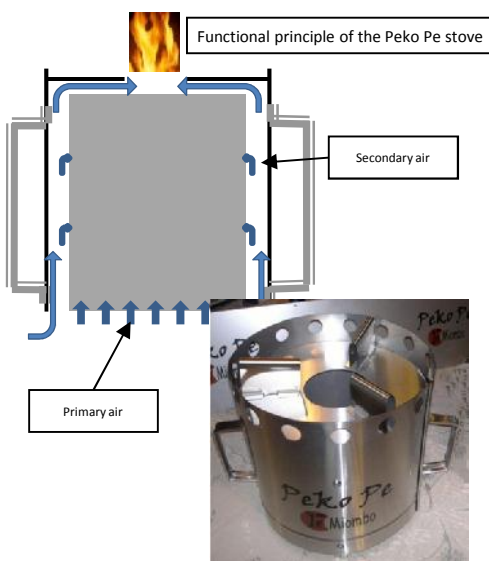
The Peko Pe is a TLUD-ND gasifier/pyrolysis household energy stove for use in clean cooking. Its primary characteristics are a clean burning operation and a flexibility with regard to different types of fuels. The stove dates back to the early 1990'ies where it among several projects found a wide distribution in a refugee camp in North of Uganda 1995. Around 5 000 units were produced using straw and woodchips as fuel.



Why use the Peko Pe stove?

- Clean household cooking
- Save forest and climate
- Use less biomass for household fuel
- Create income and jobs
- Produce biochar

Type of fuel	Grass Straw Reeds	Wood Twigs Saplings	Corn cobs Cashew
None			X
Stamping	X		
Bundling	X		
Chopping		X	X
Briquetting	X		
Crushing		X	
Pelletizing	X	X	



Production/assembly

- Use of flatpacks (above) with pre-etched parts for cutting assembly by local tin-smiths.
- Production line type of mass assembly

Operating instruction

- Remove ash and char from fuel chamber
- Fill up with dry biomass, not above the edge
- Add ignition material (stalks, shavings, shells, etc.)
- Ignite on top for proper flame
- Top lid on
- Utilize the open fire cooking/heating
- Empty fuel chamber-sprinkle water/soil on the biochar

